

# 6036SG – EVERYDAY TUB/SHOWERS

60 x 34 ½ x 76 ½ inches

SOAKER MODEL #6036SG

WHIRLPOOL MODEL #6036SGWP

SUPERCORE TUB-SHOWER #6036SGSC



## FEATURES

- Tub-shower
- Smooth wall finish
- Ergonomic backrest
- Molded toiletry shelf
- Slip-resistant textured bottom
- Left or right hand drain
- AcrylX™ applied acrylic surface
- Lifetime limited warranty

### Whirlpool Features:

- 6 directional hydrotherapy jets
- Available in White and Biscuit/Linen only
- Color matched trim
- Pneumatic on/off control
- Advanced safety suction system

## OPTIONS

- Designer drain, waste & overflow
- Shower Door Series L0516

## AQUATIC ADVANTAGE

- National distribution
- 7 manufacturing facilities
- Private fleet
- Centralized customer service
- Field support

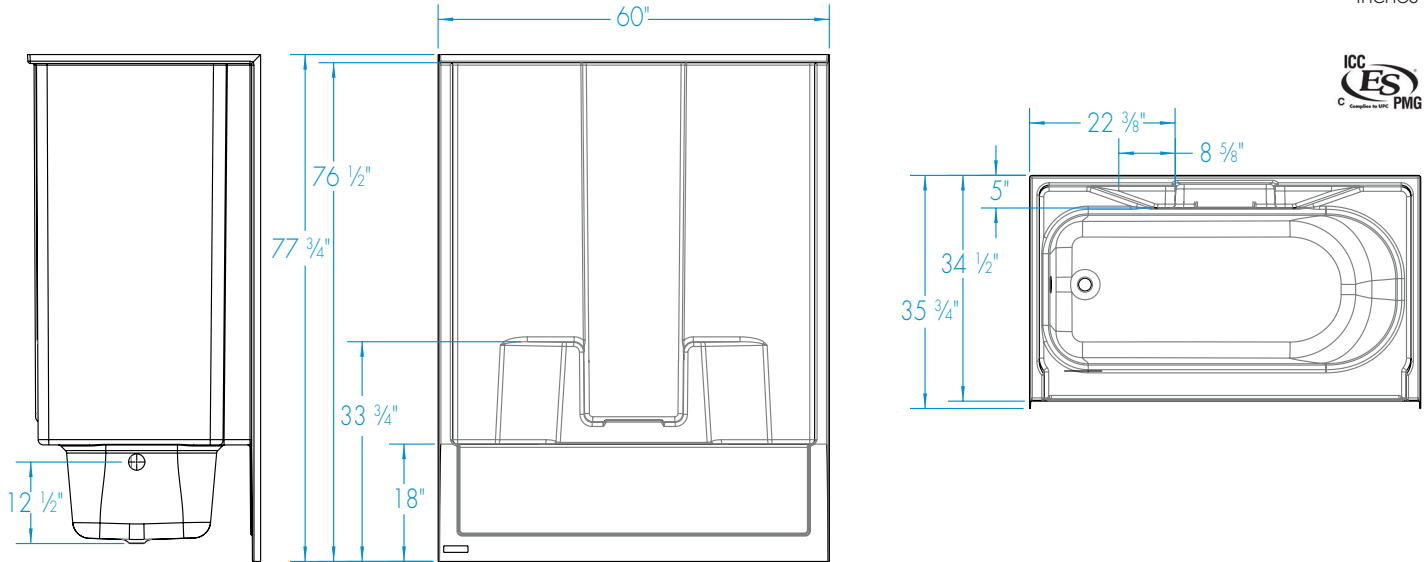
## COLOR OPTIONS

Stock	Upgraded	Premium
White	Almond Biscuit/Linen Bone	Black Mexican Sand Sand Bar Sterling Silver



# 6036SG

60 x 34 1/2 x 76 1/2  
inches



**FEATURES** lbs      Dimensional Tolerance  $\pm \frac{3}{16}$ ". Dimensions needed for site preparation should be measured from the unit. Aquatic assumes no responsibility for preparatory work.

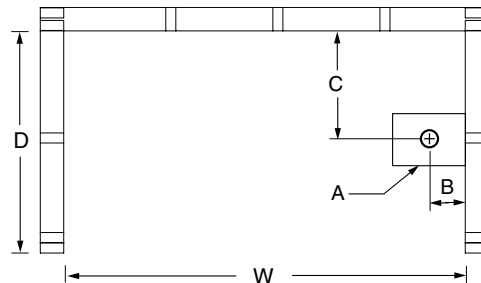
Model #	Material	Wall Finish	Jets	Motor	Controls	Drain	Net Wt.	Pkg. Wt.
Soaker #6036SG	AcrylX™	Smooth	0	-	-	LH or RH	128	133
Whirlpool #6036SGWP	AcrylX™	Smooth	6	63 GPM	Pneumatic	LH or RH	178	183

## DIMENSIONS

Specifications	inches
Width: Overall / Net	60
Depth: Overall / Net	35 3/4 / 34 1/2
Height: Overall / Net	77 3/4 / 76 1/2
Enclosure Opening	55 1/2
Skirt Height	18
Drain Rough-In (from Back Wall)	16 3/4
Drain Rough-In (from Side Wall)	2 3/16
Drain: Diameter / Clearance	2 / 2 3/4

## FRAMING DIMENSIONS inches

Type	D Depth	W Width	H Height	A	B	C
Alcove	35 3/4	60 1/8	-	Box Out	2 3/16	16 3/4



## SUMP DATA

Top of Drain to Bottom of Overflow	Capacity to Overflow gal	Min. Operating Capacity gal	WIDTH @ centerline		DEPTH @ centerline	
			Top	Bottom	Top	Bottom
10 1/2	40	35	53 1/4	46	22 3/4	21