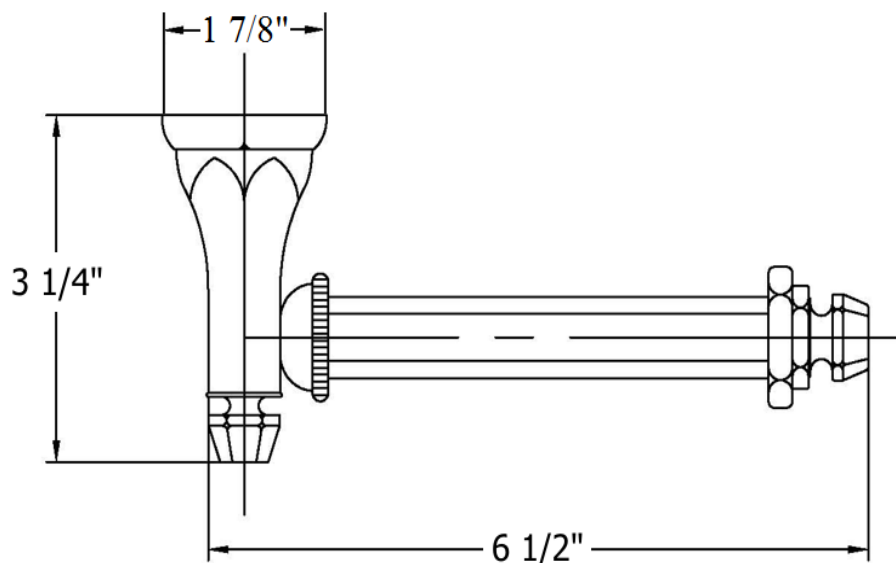


# 3820 – ‘Monarque’ Tissue Holder



## Technical Information

- Available finishes are French Weathered Brass (47), Polished Chrome (48), SoliBrass (49), Lacquered Matte Black Nickel (50), Old Gold (52), Old Silver (53), Polished Brass (55), Polished Nickel (56), Brushed Nickel (57), Satin Nickel (60), Antique Lacquered Copper (67), Antique Lacquered Brass (68), Weathered Brass (70), Lacquered Polished Black Nickel (71) and Lacquered Polished Copper (80).
- Please See Cleaning Instructions: <http://herbeau.com/CleaningAll.pdf> For Finish Care and Maintenance Information.

## Part#

## Description

- |    |                            |
|----|----------------------------|
| 01 | Screw                      |
| 02 | Finished Wall Support      |
| 03 | Monarque Escutcheon Button |
| 04 | Monarque End Cap           |
| 05 | Ball Cup & Thread          |
| 06 | Nut                        |
| 07 | Nut                        |
| 08 | All Thread                 |
| 09 | Finished Hex TP Tube       |
| 10 | Threaded Tube              |

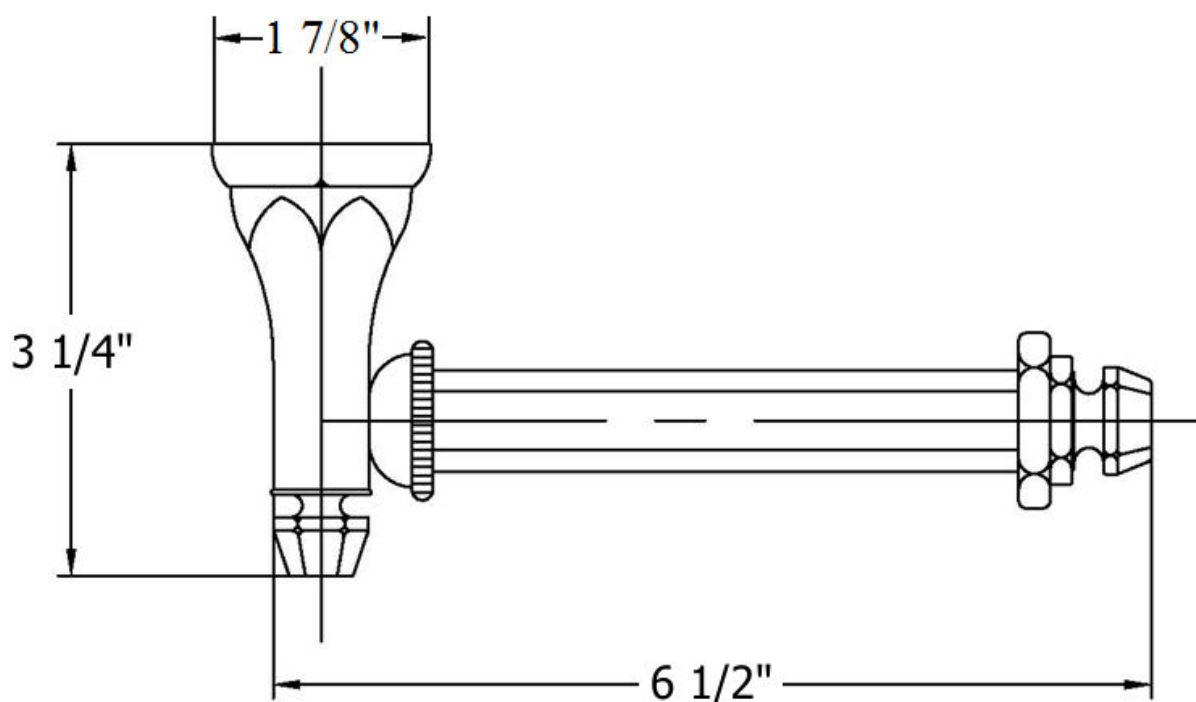
Please follow example when ordering parts for ‘Monarque’ Tissue Holder

- To order part#02 – Finished Wall Support
  - 990399xx
- Please substitute finish number needed in place of xx



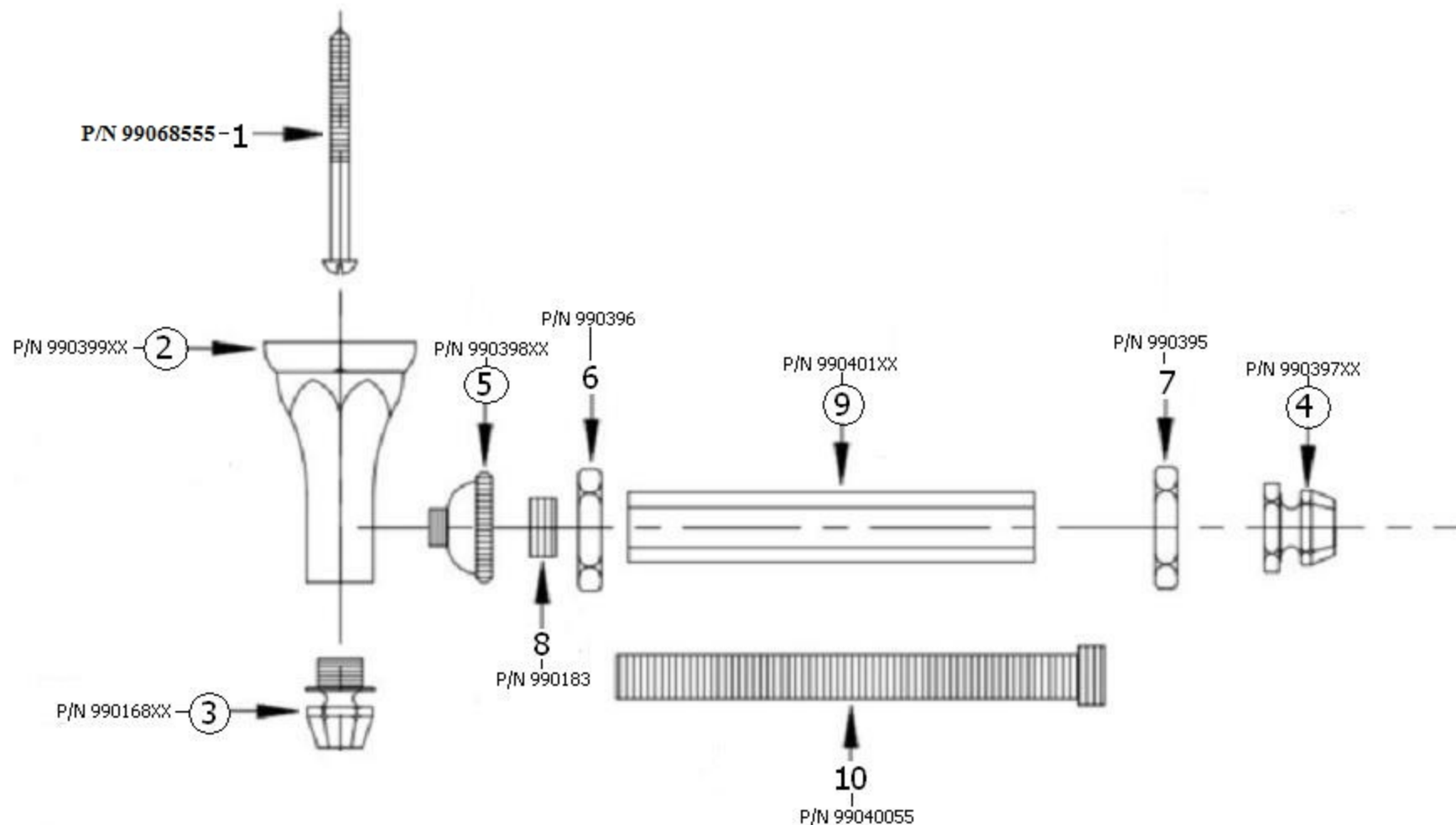
**Herbeau®**  
L'Art du Sanitaire depuis 1857

## 3820 - Monarque" Tissue Holder



# 3820 - 'Monarque' Tissue Holder

\*P/N = PART NUMBER



○ = FINISHED PARTS  
XX = TWO DIGIT FINISH CODE

Copyright©2017 Herbeau Creations. All rights reserved. All product and specifications are subject to change without notice. Herbeau Creations is not responsible for typographical and/or dimensional errors. Typographical errors are subject to correction.