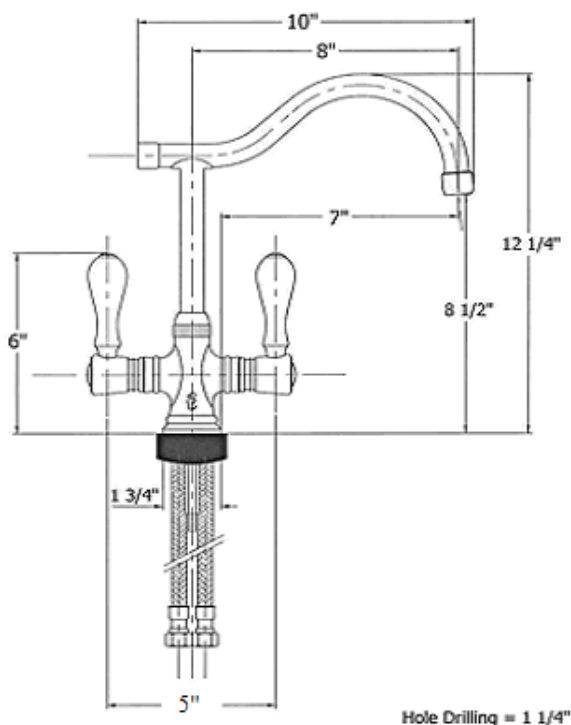


4202 - 'Ostende' Single Hole Mixer



Technical Information

- IAPMO: NSF/ANSI 61, NSF/ANSI 372 & ASME A112.18.1/CSA B125.1 certified.
- Maximum flow rate is 1.2 GPM with new low flow restrictor.
- 1 1/4" hole drilling.
- Uses Flühs ceramic cartridges.
- Available finishes are French Weathered Copper & Brass (46), French Weathered Brass (47), Polished Chrome (48), SoliBrass (49), Lacquered Matte Black Nickel (50), Polished Brass (55), Polished Nickel (56), Brushed Nickel (57), Polished Copper & Brass (58), Weathered Copper & Brass (59), Satin Nickel (60), Antique Lacquered Copper (67), Antique Lacquered Brass (68), Weathered Brass (70), Lacquered Polished Black Nickel (71) and Lacquered Polished Copper (80).
- Please See Cleaning Instructions: <http://herbeau.com/CleaningAll.pdf> For Finish Care and Maintenance Information.

Part #	Description
01	Handle Screw
02	Finished Metal Washer
03	Rubber O-Ring
04	Handle Escutcheon
05	Handle Elbow
06	Flat Rubber Washer
07	Nylon Clip
08	Rubber Horse Shoe Washer
09	Swan Nut
10	Rubber O-Ring
11	Aerator Washer
12	Aerator Filter
13	Aerator Cover/Spout Tip
14	Main Body
15	Rubber O-Ring
16	Spline Adapter
18	12" X 3/8" Flexible Supply Hose & O-ring
18	Optional 30" X 3/8" Flexible Supply Hose & O-Ring
19	Rubber O-Ring
20	Threaded Stem
20	12" Optional Threaded Stem Extension
22	Brass Horse Shoe
23	Brass Washer
24	Brass Hex Nut
81	1/4 Turn Ceramic Cartridge - Hot
82	1/4 Turn Ceramic Cartridge - Cold
93	White Ceramic or Finished Wood Handle
94	Ostende Complete Spout Assembly

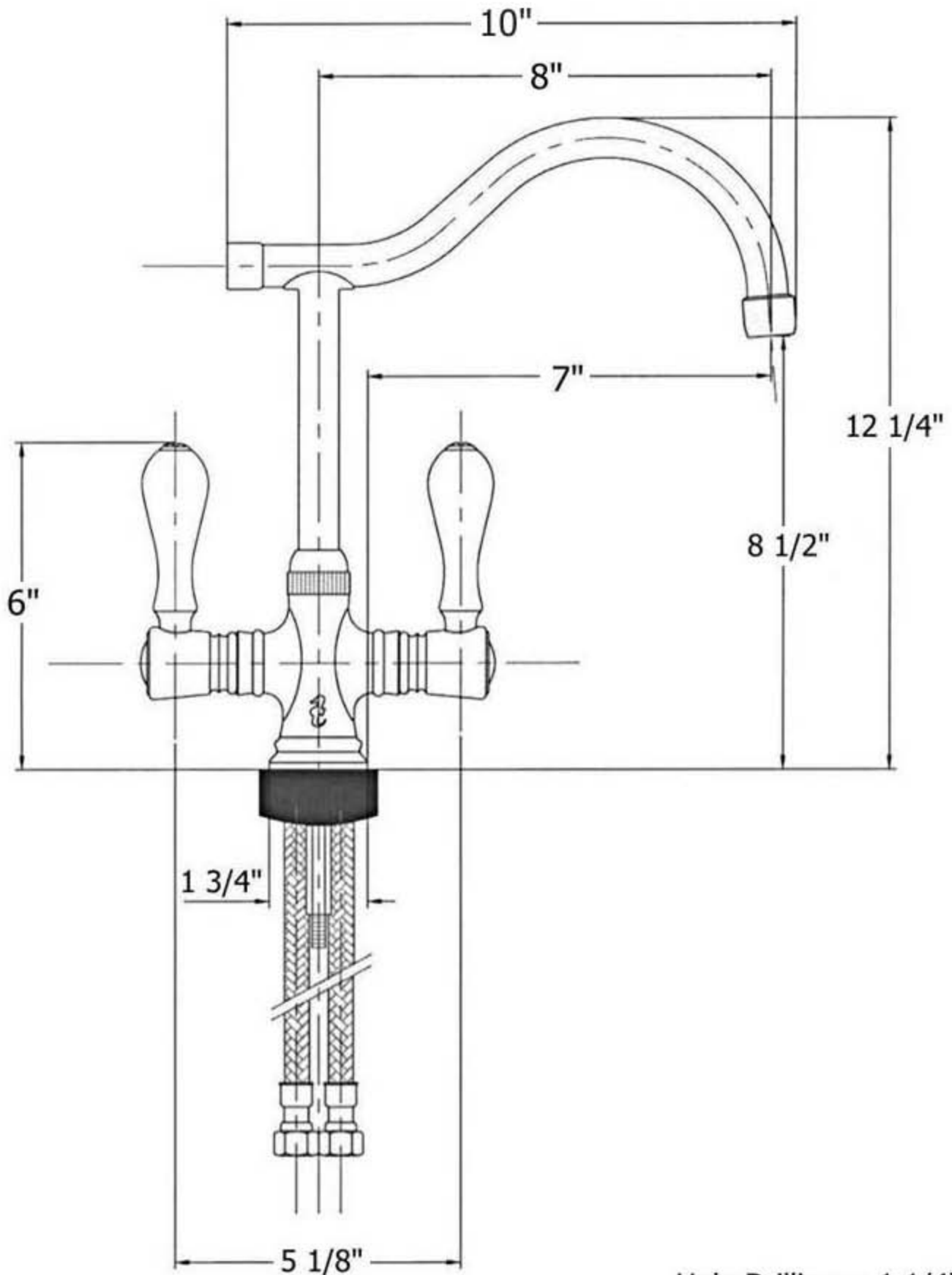
Please follow example when ordering parts for 'Ostende' Single Hole Mixer

- To order part #01 – Handle Screw
 - 920014**xx**
- Please substitute finish number needed in place of **xx**



Herbeau®
L'Art du Sanitaire depuis 1857

4202 - 'Ostende' Single Hole Mixer



Hole Drilling = 1 1/4"

4202 - 'Ostende' Single Hole Mixer

*P/N = PART NUMBER

